

ASSOCIATION OF TEACHERS OF MATHEMATICS  
IN WESTERN MASSACHUSETTS, AN AFFILIATED  
GROUP OF THE NATIONAL COUNCIL OF  
TEACHERS OF MATHEMATICS

# MATHWEST NEWS

Volume 18, Issue 2

June 2005

## Inside This Edition:

- ★ Fall General Membership Meeting Info
- ★ Our Spring Conference
- ★ Summer Professional Development
- ★ 2005—2006 MATHWEST Calendar
- ★ NCTM Conference

*Welcome to the first on-line edition of  
MATHWEST NEWS!!*

*Please be sure to look at the rest of  
the website for any grant applications,  
conferences, meeting notes, and  
anything else MATHWEST  
has to offer.*

*If you can't find it, please contact us  
and we will be sure to answer your  
questions!*

**VISIT OUR WEB SITE:**  
[www.mathwest.org](http://www.mathwest.org)

## Table of Contents

Spring Conference Info	2
2005-2006 MATHWEST Calendar	3
Professional Development	4
Fall General Membership Meeting	6
Poster Contest Winners Announced	7

## **Congratulations, Ruth O'Malley!** **A 2005 ATMIM Mathematics Hall of Fame Inductee**

For over 40 years, Ruth O'Malley has been a devoted mathematics educator in the State of Massachusetts. Ruth has been a career teacher and Mathematics Department Chair at Palmer High School, Palmer MA. Her legacy has been as a workhorse for improving the teaching and learning of mathematics in the Commonwealth and beyond. She has served mathematics education with distinction and tireless dedication, her leadership helping to cultivate MATHWEST into a viable professional organization for teachers of mathematics in Western Massachusetts, including serving as a charter member and as its president during a critical growth period in that organization.

Ruth was also a member of the Board of Directors of the Massachusetts Mathematics Initiative, the State Wide Action Team and the Advisory Board of the Regional Alliance all of which contributed to the development of the first Massachusetts Mathematics Framework. Ruth rarely missed a meeting of any organization or committee and almost always added a critical and valuable "view from the field" to any discussion. That tradition carried over to her tenure as President of the Association of Teachers of Mathematics in New England. For both MATHWEST and ATMNE she also served as NCTM Representative. Not so well known but equally important was her volunteer work with WGBY (sister station in Springfield to WGBH in Boston) where she made many behind the scenes contributions to both mathematics education and education in general.

Ruth O'Malley was neither flashy nor a flash in the pan, but she has indeed made an extraordinary contribution to the advancement of mathematics education and mathematics teaching in Massachusetts and beyond.



**T<sup>3</sup>•Teachers Teaching with Technology™**

---

***MATHWEST Presents the...***

***T<sup>3</sup> Regional Conference***

***Sponsored by Texas Instruments***

**Friday, March 31, 2006 and Saturday, April 1, 2006**

**MassMutual Convention Center**

**Springfield, Massachusetts**

MATHWEST is the proud host of the two-day 2006 T<sup>3</sup> Regional Conference. To be held at the new state-of-the-art MassMutual Convention Center in downtown Springfield, the conference will take place on Friday and Saturday, March 31st – April 1st. Although the majority of the over 40 sessions will emphasize the use of technology in the middle & high school classroom, there will be special sessions especially designed for elementary teachers. These sessions will not necessarily involve TI technology, but rather address the issues of our membership.

In addition, a one-day Algebra 1 T<sup>3</sup> Institute will take place concurrently during the T<sup>3</sup> Regional Conference and is targeted to teachers of Pre-algebra and Algebra 1 who have little to no experience with the TI-83 Plus, TI-83 Plus Silver Edition, TI-84 Plus, and TI-84 Plus Silver Edition. The primary objective of this Institute is to explore pre-algebra and algebra concepts and problems using TI calculators and computer technology as tools for teaching and learning, and to instruct teachers in new and innovative ways to effectively teach mathematics using TI technology. In addition, participants will learn new teaching strategies and will have opportunities for hands-on experience.

Currently, MATHWEST is accepting speaker proposals. See [www.mathwest.org](http://www.mathwest.org) for a proposal form.

# MATHWEST 2005-2006 Calendar of Events

## SEPTEMBER

- 8 [MATHWEST Board Meeting](#)  
4 PM – Home of Cindy Tuthill, E. Longmeadow
- 22 [AP Calculus Support Group](#)  
4 PM – Bertucci's Restaurant, W. Springfield

## OCTOBER

- 6 - 8 [NCTM Regional Conference](#)  
Hartford , CT
- 13 [T<sup>3</sup> Conference Committee Planning Meeting](#)  
4 PM – Home of Scott Trahan, Agawam
- 20 [MATHWEST Board Meeting](#)  
4 PM - Bertucci's Restaurant, W. Springfield
- 27 [MATHWEST General Membership Meeting](#)  
3:30 PM - Media Education Foundation  
60 Masonic St, Northampton

## NOVEMBER

- 10 [MATHWEST Board Meeting](#)  
4 PM – Friendly's, W. Springfield
- 17 [AP Calculus Support Group](#)  
4 PM – Bertucci's Restaurant, W. Springfield

## DECEMBER

- 8 [T<sup>3</sup> Conference Committee Planning Meeting](#)  
4 PM – Home of Scott Trahan, Agawam
- 15 [AP Calculus Support Group](#)  
4 PM – Bertucci's Restaurant, W. Springfield



## JANUARY

- 12 [MATHWEST Board Meeting](#)  
4 PM – Friendly's, W. Springfield
- 13 [Trip to Mohegan Sun Casino](#)  
Leave Pier 1 parking lot in Holyoke, 6 PM
- 19 [AP Calculus Support Group](#)  
4 PM – Bertucci's Restaurant, W. Springfield

## FEBRUARY

- 9 [T<sup>3</sup> Conference Committee Planning Meeting](#)  
4 PM – Home of Scott Trahan, Agawam
- 23 [T<sup>3</sup> Conference Committee Planning Meeting](#)  
4 PM – Home of Scott Trahan, Agawam

## MARCH

- 9 [MATHWEST Board Meeting](#)  
4 PM – Friendly's, W. Springfield
- 16 [T<sup>3</sup> Conference Committee Planning Meeting](#)  
4 PM – Home of Scott Trahan, Agawam
- 23 [AP Calculus Support Group](#)  
4 PM – Bertucci's Restaurant, West Springfield
- 31 [T<sup>3</sup> Regional Conference](#)  
MassMutal Convention Center, Springfield

## APRIL (Mathematics Month)

- 1 [T<sup>3</sup> Regional Conference](#)  
Sponsored by [Texas Instruments](#) and MATHWEST  
MassMutal Convention Center, Springfield
- 8 [AP Calculus & AP Statistics Practice Exam](#)  
First Baptist Church, Agawam
- 15 [Mathematics Month Poster Contest Deadline](#)
- 20 [AP Calculus Support Group](#)  
4 PM – Bertucci's Restaurant, West Springfield

## MAY

- 11 [MATHWEST Board Meeting](#)  
4 PM – Home of Scott Trahan, Agawam
- 18 [AP Calculus Support Group](#)  
4 PM – Bertucci's Restaurant, W. Springfield

# ***PROFESSIONAL DEVELOPMENT OPPORTUNITIES***

TERC's Center for Education Partnerships (CEP) is a partner in the CERTL Network based at the Center for Excellence in Research, Teaching and Learning at Wake Forest University. Through the CERTL Network, CEP will provide nationally recognized teacher professional development programs, including Carnegie Learning's Developing Algebraic Thinking course for Grade 3-8 teachers and ETA/Cuisenaire's Dynamic Classroom Assessment (DCA) facilitator training. Both programs are research-based, proven approaches to increasing teachers' skills and improving student learning.

## **Developing Algebraic Thinking from Carnegie Learning Inc.**

Developing Algebraic Thinking (Boston area, August 15-19, 2005) provides an opportunity for practicing teachers to increase the breadth and depth of their current content knowledge in mathematics. The course focuses on supporting growth in the use of algebraic reasoning, including, but not limited to, patterns, proportional reasoning, use of multiple representations, and performing regressions. Participants engage in discussions, individual and group activities, and computer work. While Developing Algebraic Thinking regularly costs \$750, the Regional Alliance is sponsoring one-half of the course cost and this summer's participants will pay half price (\$375).

## **Dynamic Classroom Assessment: Linking Mathematical Understanding to Instruction**

Developed by George W. Bright, University of North Carolina at Greensboro and Jeane M. Joyner, Meredith College; published by ETA/Cuisenaire, Dynamic Classroom Assessment (DCA) Elementary Facilitator Training (August 22, 2005 in the Boston area) will prepare participants to offer staff development on DCA to K-5 teachers. DCA is a professional development program designed to help teachers learn how to gather information about students' mathematical thinking, make inferences about what students know and can do, and then make instructional decisions that align with students' mathematical understanding. DCA builds teachers' knowledge of effective classroom assessment practices, enabling them to tailor their instructional approaches to fit students' needs and strengths.

Only certified facilitators can purchase and present DCA. Upon completion of the trainings, participants' names will appear on a list of DCA-certified facilitators. The DCA elementary facilitator course regularly costs \$400, but this summer, with the support of the Regional Alliance, participants will pay half price (\$200) and receive DCA materials that sell for \$150.

To register for either training, visit the CERTL website at: [www.certl.org/workshops](http://www.certl.org/workshops) Registration deadline: June 30, 2005 Questions: contact Mark Kaufman at [mark\\_kaufman@terc.edu](mailto:mark_kaufman@terc.edu) or call 617-873-9649

---

## **Summer Math for Teachers**

[www.mtholyoke.edu/offices/conference/summer.shtml#maa](http://www.mtholyoke.edu/offices/conference/summer.shtml#maa)

Session I: June 28-July 8, 2005

Session II: July 17-29, 2005

Session III: August 7-19, 2005

Summer Math for Teachers consists of five institutes for teachers of mathematics, grades K-8. The program is designed to allow teachers to develop new classroom strategies that promote mathematical understanding, explore mathematical ideas with the use of computers and calculators, and consider current research in mathematics education. For more information, contact Virginia Barnstable at (413) 538-2063.

---

## Summer Mathematics Institutes VT Mathematics Partnership

The Vermont Mathematics Partnership is offering several mathematics institutes to be held this summer. Cost is \$850 per course and includes 3 graduate credits in mathematics, lunch and all course materials. Some of the offerings available for Summer 2005:

### **Making Informed Decisions: Data, Statistics & Probability**

July 11-15, 2005

one full-day fall follow-up session  
Montpelier, Vermont

### **Laying the Foundation: Building a Deep Understanding of Number in the Primary Grades**

July 11 - 15, 2005

2 after school follow-up sessions in the fall  
F.H. Tuttle Middle School  
South Burlington, Vermont

### **Modeling Change**

August 1-5, 2005

one full-day fall follow-up session  
Castleton State College

More information on registration for the above courses can be found at [www.vermontmathematics.org/SummerCourses05/summereventsinfo.cfm](http://www.vermontmathematics.org/SummerCourses05/summereventsinfo.cfm) Other course offerings can be found on the same site. You can also contact Lucinda Morabito at (802) 828-1301 or email her at [lmorabito@vermontinstitutes.org](mailto:lmorabito@vermontinstitutes.org)

---

## **Advanced Mathematics in the Grade 8 to High School Classroom A Massachusetts DOE Content Institute**

July 5, 7, 12, 14, 19, 21, 26, 28  
September 17 & October 1, 15, 29  
West Springfield High School  
West Springfield, MA

This free Advanced Mathematics summer institute will prepare grades 8 through 12 educators to work with a target population of advanced learners in the field of mathematics. Each class will center around 3 to 4 lessons or activities dealing with challenging concepts related to the specific theme of the day, from patterns to probability. Participants will then develop portfolios of instructional materials and resources to use in their classrooms. Instruction will include the integration of technology, specifically the TI-84+ graphing calculator and Geometer's Sketchpad. Teachers who successfully complete this institute will have a greater depth of knowledge of the concepts and skills in the Mathematics Curriculum Framework and the skills assessed on the Massachusetts Test for Educator Licensure (MTEL) for high school mathematics. In order to receive the 67.5 professional development points, the participant must complete the 12 day course and fulfill the participation requirements. Graduate credit is available through Westfield State College. Space is limited to 25 people. For more information please visit: [www.mathwest.org/advancedmath](http://www.mathwest.org/advancedmath).

**Be sure to visit the Massachusetts DOE website for more information regarding summer content institutes at [www.doe.mass.edu/frameworks/cinstitute](http://www.doe.mass.edu/frameworks/cinstitute).**

# Fall General Membership Meeting

October 27, 2005

Registration at 3:30 PM

Sessions run from 4:00 to 5:15 PM

The meeting will be held at 60 Masonic St (The old firehouse) in Northampton, MA. The sign on the side of the building says Media Education Foundation and the meeting space is on the first floor and it is directly behind the Woodstar Café, which has delicious coffee and pastries!!

## **Session A: Northampton Math Trail-presented by Betsy Sokol and Olga Michael**

Would you like to go on a math field trip? Join us on and we will provide you with a series of math problems that have to be solved by walking on Main Street in Northampton. We originally created this Math Trail as a field trip for 7th or 8th grade students, but you could adapt this idea for other grades or communities. (Please bring a clipboard.)

## **Session B: Match Wits with YOUR newspaper!**

A daily newspaper is the ultimate non-fiction informational text, chock-full of opportunities to exercise math knowledge. You can turn a newspaper's numbers, patterns, columns, advertisements, and yes, even editorials, into classroom activities that are fun for students and easy for you. Presentation will include hand-outs, teacher guide, and reproducible rubrics for measuring outcomes. Deborah O. Doulette is Newspaper in Education Manager at the Daily Hampshire Gazette in Northampton. She is also a certified teacher. Newspaper in Education is an international program, dedicated to growing lifelong readers and lifelong lovers of newspapers, and can be found at daily and weekly newspapers across the world.

**Following the meeting, join the MATHWEST board members afterwards at any of the great restaurants in downtown Northampton for dinner.**

## ***October General Membership Meeting Registration Form***

Name: \_\_\_\_\_

Address: \_\_\_\_\_

\_\_\_\_\_

Phone: \_\_\_\_\_ E-mail: \_\_\_\_\_

Which session will you be attending?

\_\_\_\_\_ Session A: Math Trail

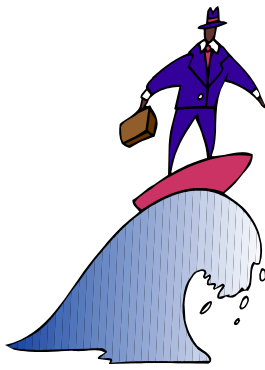
\_\_\_\_\_ Session B: Math Newspaper

Which type of registration do you need?

\_\_\_\_\_ FREE for members who are up-to-date on their membership

\_\_\_\_\_ \$20 for new members (includes a one year membership)

Send your check and this form to: MATHWEST, c/o Fall Meeting, PO Box 139, Feeding Hills, MA 01030-0139. If you are a new member, please make certain to also fill out the membership form on the last page.



## Ride the Crest: Connect, Reach, Enjoy, Succeed, and Think! Math Month Poster Contest Results

On Thursday, April 28th, Ms. Anne Hallahan of Holy Cross School and Ms. Tricia Lynn of Springfield Alternative Schools met at Cathedral High School to judge the 34 posters that were entered in this year's contest. Here are a list of winners!! Thank you to all who participated, encouraged, and helped in any way!

### High School Division

- 1st place & winner of TI-84+ graphing calculator:  
Erica from Agawam High School
- 2nd place & winner of Barnes & Noble gift certificate:  
Erica from Cathedral High School
- 3rd place & winner of Math Software:  
Nathan from Belchertown High School
- Honorable Mention:  
Katie from South Hadley High School

### Middle Grades Division

- 1st place & winner of Barnes & Noble gift certificate:  
Frances from Lenox Memorial High School
- 2nd place & winner of scientific calculator:  
Julianne from St.Joan/George School
- 3rd place & winner of Math Software:  
Matt from Mahar Regional School

### Elementary Grades Division

- 1st place & winner of Barnes & Noble gift certificate:  
Audrey from the Clarke School for the Deaf
- 2nd place & winner of a four-function calculator:  
Gabby from the Clarke School for the Deaf
- 3rd place & winner of Math Software:  
Jennifer from the Clarke School for the Deaf



Principal Dr. Linda Prystupa and Mathematics Teacher Patricia Bertone-Gross present Erica from Agawam High School her first prize in the MATHWEST Poster Contest.

### **Inflation takes its toll on MATHWEST dues!**

No, it's not the economy or George W. Bush. MATHWEST has been expanding by leaps and bounds. In order to accommodate the new, larger conferences, we are forced to raise membership dues effective September 1, 2005. Please renew your membership before September 1st in order to receive the old rates. After September 1st, the new membership dues will be \$20 for a one-year membership and \$50 for a three-year membership. Save now and renew today! Fill out the membership form located on the last page.

## **The NCTM Eastern Regional Conference in Hartford needs your help!!**

ATMNE needs you to volunteer to serve on one of the committees for which we still need help. Regarding our volunteer opportunities, we have a tremendous need for your assistance at the conference.

Each session requires a Meeting Room Committee Member, responsible for greeting all speakers, monitoring workshop capacities, and assisting speakers as needed. Please consider serving ATMNE and NCTM in this task, as we need 100 committee members! To help on this committee, email Ed Dorsett at for an application form at [eddorsett@optonline.net](mailto:eddorsett@optonline.net).

In addition, volunteers are needed for the Registration and Hospitality Committees. Hospitality members provide information for attendees regarding room location, parking, restaurants, activities in the area, etc. Registration members handle on-site registration and distribute badges and materials to speakers and vendors. Contact Patti Hahn at [phahn@marlborough.k12.ct.us](mailto:phahn@marlborough.k12.ct.us) if you are interested in either of these two committees.



# BOARD OF DIRECTORS

## OFFICERS

### President

**Scott L. Trahan** (05-06)  
Agawam High School  
760 Cooper Street  
Agawam, MA 01001  
Tel. (413) 789-2292 (H)  
Tel. (413) 821-0530 (W)  
[SLTrahan@aol.com](mailto:SLTrahan@aol.com)

### Past President

**Dr. Louise M. Lataille** (05)  
21 Maple Street  
Chicopee Falls, MA 01020  
Tel: (413) 592-7120  
[louiselat@hotmail.com](mailto:louiselat@hotmail.com)

### Secretary

<<Vacant>>

### Treasurer

**Patricia Bertone-Gross** (05-06)  
22 Leonard Avenue  
Agawam, MA 01001  
Tel. (413) 789-0379  
[pbertonegross@yahoo.com](mailto:pbertonegross@yahoo.com)

## BOARD

**Ellen Follett** (04-05)  
85 Kelly Drive  
West Springfield, MA 01089  
Tel: (413) 736-1614  
[follett@wsps.org](mailto:follett@wsps.org)

**Cecilia A. Goncalves** (04-05)  
47 Beachside Drive  
Ludlow, MA 01056  
Tel. (413) 583-4313  
[msgoncalves2002@yahoo.com](mailto:msgoncalves2002@yahoo.com)

**Kerri Hallihan** (05-06)  
610 East Pleasant St. Apt. #2F  
Amherst, MA 01002  
Tel. (413) 549 - 4039  
[hallihank@yahoo.com](mailto:hallihank@yahoo.com)

**Marnie Henneman** (04-05)  
PO Box 993  
Belchertown, MA 01007  
Tel: (413) 323-5211

**Barbara Martowski** (04-05)  
965 Ware Street  
Palmer, MA 01069  
Tel: (413) 283-8995  
[bmartowski@comcast.net](mailto:bmartowski@comcast.net)

**Cindy Tuthill** (05-06)  
7 Greeneacre Lane  
East Longmeadow, MA 01028  
Tel: (413) 525-1627  
[teach12753@charter.net](mailto:teach12753@charter.net)

## EX-OFFICIO BOARD

**Harold (Spike) Clancy**  
2244 Baptist Hill Road  
Palmer, MA 01069  
Tel. (413) 289-0085  
[scclancy@crocker.com](mailto:scclancy@crocker.com)

**Lyn Heady**  
21 Manhan Street  
Northampton, MA 01060  
Tel: (413) 584-7041  
[lheady@crocker.com](mailto:lheady@crocker.com)

**William Masalski**  
25 Cherry Lane  
Amherst, MA 01002  
Tel. (413) 549-6978  
[william.masalski@educ.umass.edu](mailto:william.masalski@educ.umass.edu)

**Ruth O'Malley**  
1085 Pleasant Street  
Palmer, MA 01069  
Tel: (413) 283-3386  
[romal@mail.ccsinet.net](mailto:romal@mail.ccsinet.net)

## COMMITTEES

### Historian

<<Vacant>>

**Mary Alice Wilson Grant**  
<<Vacant>>

### Membership

**Cecilia A. Goncalves**

**NCTM Representative**  
**Barbara Martowski**

### ATMNE Representative

**Cindy Tuthill**

### Ruth O'Malley Presenter's Award

**Barbara Martowski**

### Newsletter Editor

**Tricia Lynn**

189-I Essex Street  
Indian Orchard, MA 01151  
Tel. (413) 543 - 8585  
[mathwestnews@yahoo.com](mailto:mathwestnews@yahoo.com)

### NE Mathematics Journal

#### Editorial Advisor

**Charles Tranfield**  
10 Homer Avenue  
Keene, NH 03431

## Editor's Corner

Every newsletter, we will be introducing you to the MATHWEST Board. If you see them, say hello.

This month... meet our membership chair, Celilia Goncalves. Celilia is a mathematics teacher at Palmer High School. She is the advisor of the math team. She has been a resident of Ludlow for the past 26 years of her life. She recently finished her Master's degree from Western New England College in Mathematics with an emphasis in education. She enjoys camping every weekend in Vermont, and hopes to move there one day. She also enjoys hiking and playing softball.

So, if you see her where you time you visit!





## MATHWEST MEMBERSHIP APPLICATION FORM

Mail to: MATHWEST, P.O. Box 139, Feeding Hills, MA 01030-0139

Membership Category:	Area of Professional Interest:	Application Type:
<input type="checkbox"/> 1 Year Regular (\$15)	<input type="checkbox"/> Elementary	<input type="checkbox"/> New Membership
<input type="checkbox"/> 1 Year Full-Time Student (\$5)	<input type="checkbox"/> Middle School	<input type="checkbox"/> Renewal
<input type="checkbox"/> 1 Year Full-Time Retired (\$10)	<input type="checkbox"/> Secondary	
<input type="checkbox"/> 3 Year Regular (\$40)	<input type="checkbox"/> College	

Amount Enclosed \$ \_\_\_\_\_

NAME \_\_\_\_\_

STREET \_\_\_\_\_

CITY \_\_\_\_\_ STATE \_\_\_\_\_ ZIP \_\_\_\_\_

PHONE \_\_\_\_\_ EMAIL \_\_\_\_\_

Are you a member of NCTM?  YES  NO

A member of another NCTM affiliate?  YES  NO If yes, which one? \_\_\_\_\_

*Please: If paying by PO, please include the names and addresses of members to be renewed.*

### **DISCOVER the CONNECTIONS: Instruction and Assessment NCTM EASTERN REGIONAL CONFERENCE & EXPOSITION OCTOBER 6-8, 2005 Connecticut Convention Center in Hartford, CT**

Save 15% off the on-site fee! Your pre-registration form must be received by September 9, 2005.

Registering is easy! There are four ways!

- 1. Online:** Register online at [www.nctm.org/meetings/Hartford.registration.htm](http://www.nctm.org/meetings/Hartford.registration.htm).  
Available 24 hours a day, 7 days a week. It's the fastest way for you to register.
- 2. By phone:** Call (888) 747-8704 or (972) 349-5804 with your credit card information.  
Phone lines are open Monday through Friday, 7 AM to 7 PM, CST.
- 3. By mail:** Mail your pre-registration form and payment to:  
NCTM Regional Conference  
PO Box 841207  
Dallas, TX 75284-1207
- 4. By fax:** Fax your pre-registration form with credit card information to (972) 349-7715.

NCTM accepts checks, credit cards (American Express, MasterCard, and Visa), and purchase orders. For registration forms and more information, please visit [www.nctm.org](http://www.nctm.org).